

Dt.: 27th Dec, 2024

INDEX	NIFTY	BANKNIFTY	USDINR
Outlook	Neutral	Neutral	Neutral

INSTITUTIONAL TRADING ACTIVITY IN CRS.			
Category	Buy Value	Sell Value	Net Value
FII	4,256.31	6,632.98	-2,376.67
DII	11,592.43	8,256.27	+3,336.16

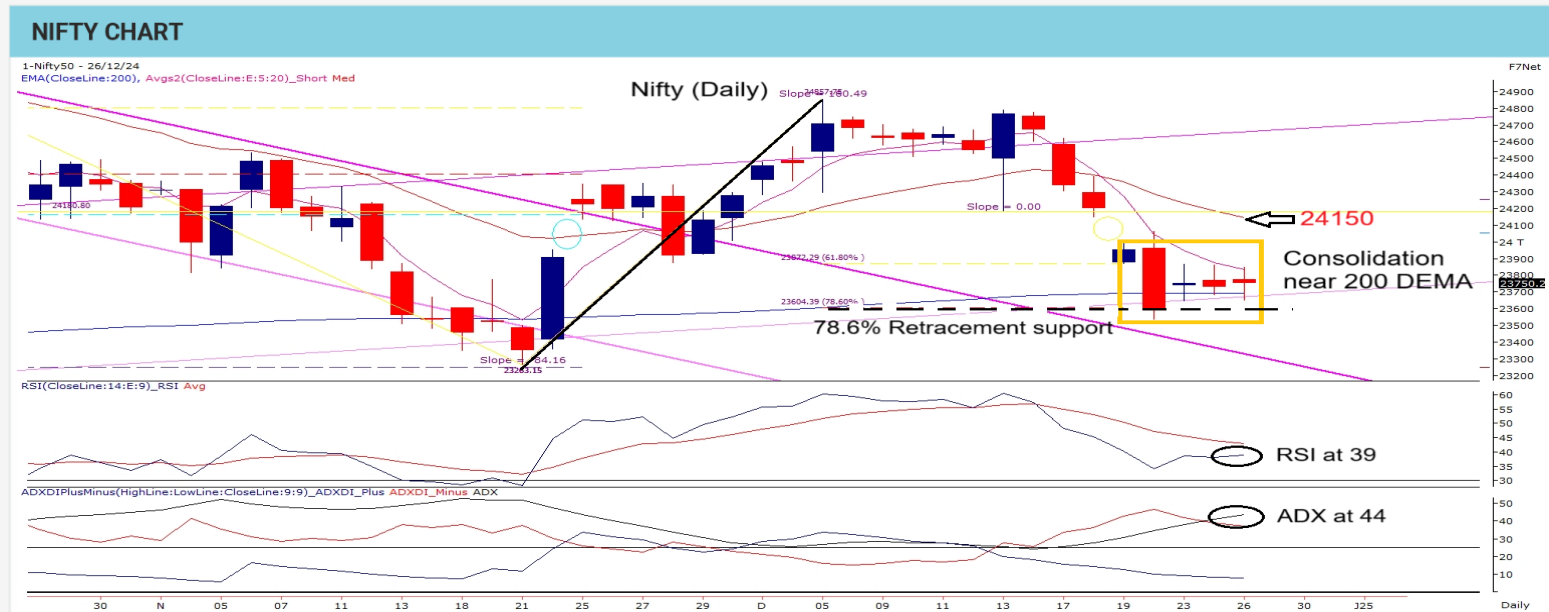
TRADE STATISTICS FOR 26/12/2024			
Instrument	No. of Contracts	Turnover (Cr.)	Put Call Ratio
Index Fut.	556323	37167.19	
Stock Fut.	4565126	291723.2	
Index Opt.	291713097	19618457	0.81
Stock Opt.	10650208	714918.7	
F&O Total	307484754	20662266	



PIVOT TABLE					
	R2	R1	PIVOT	S1	S2
NIFTY	24341	23977	23750	23514	23314
BANKNIFTY	53268	52144	51770	50432	48916

NIFTY FUT.			
	TRIGGER	T1	T2
Above	24000	24267	24914
Below	23500	23149	22865

BANK NIFTY FUT.			
	TRIGGER	T1	T2
Above	52000	52928	53817
Below	49500	48975	47543



Nifty ended the December series on a flat note, forming an Inverse Hammer on its Expiry-to-Expiry scale with rollovers at 77.66%. The index continued to consolidate within the 23,500–24,000 range, marked by spinning top candlestick patterns. A strong support base is evident around 23,700–23,500, validated by an Inside Bar and a Doji formation near the 200 DEMA, further reinforced by the 78.6% Fibonacci retracement level at 23,605. While trend strength indicators remain weak, an exhausted ADX and extreme intraday oversold conditions suggest a potential short-covering-driven rebound. Options data points to an immediate trading range of 23,500–24,000, with 23,700 acting as a critical trigger for upward momentum. If Nifty holds the 23,560–23,500 zone, a rebound toward 24,000 is likely within the week, but a breach below this range could lead to additional downside. In the near term, markets are expected to consolidate, offering selective sectoral opportunities for investors, while traders should stay cautious and manage positions within the defined range.

Trade Scanner: ADANI PORTS, APOLLO TYRE, ANGEL ONE, BATA INDIA, BHARATFORG, BPCL, CIPLA, CYIENT, NYKAA, INDIGO, ITC, SUNPHARMA, TATA MOTORS, UNITEDSPIRITS. AMBUJA CEMENT, BAJAJ FINSRV, DLF, HDFC AMC, HCLTECH, SBIN.

RESEARCH DESK: Sacchitanand Uttekar - VP - Research (Derivatives & Technicals)

Disclaimer: Investments in securities market are subject to market risk, read all the related documents carefully before investing.

The securities quoted are for illustration only and are not recommendatory | Registration granted by SEBI and certification from NISM in no way guarantee performance of the intermediary or provide any assurance of returns to investors.

Disclaimer: This document is for private circulation and information purpose only and should not be regarded as an investment, trading, taxation, legal or price risk management advice. In no circumstances it is considered as an offer to sell or a solicitation of any offer to buy or sell the Equity derivatives mentioned herein. We and our affiliates, group companies, directors and employees, and directors and employees of our affiliates and group companies, including persons involved in the preparation or issuance of this material may (a) have positions in Equity (derivatives or physical) mentioned hereby or (b) have other positions which might have conflicting interest with respect to any related information. The information contained hereby may have been taken from sources which we believe are reliable. We do not guarantee that such information is accurate or complete and it should not be relied upon as such. Any opinion expressed reflects judgments at this date and are subject to change without notice. Risk of loss in Equity derivatives trading can be substantial. Persons trading in Equity Derivatives should consider the suitability of trading based upon their resources, risk appetite and other relevant information; and understand that statements regarding future prospects may not be realized.